

## Plastic square shape photoelectric sensors **PSR** series



## Features

- ◆ 18mm threaded cylindrical installation or side installation, it is an ideal substitute for various styles of sensors;
- ◆ Background suppression type, stable detection regardless of white or black detected objects;
- ◆ With 360° visible bright LED status indicator;
- ◆ Visible light spot, easy to install and debug.



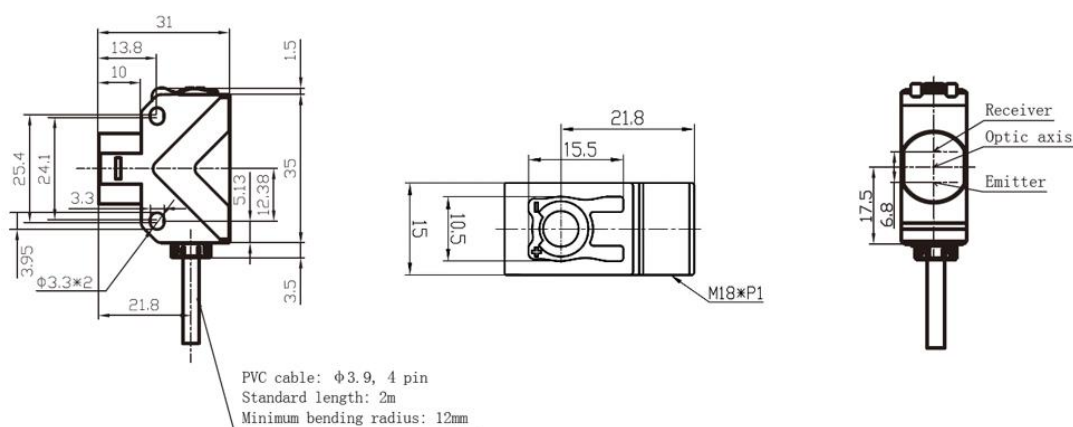
## Part number

NPN	PSR-YC10DNBR	PNP	PSR-YC10DPBR
-----	--------------	-----	--------------

## Technical specifications

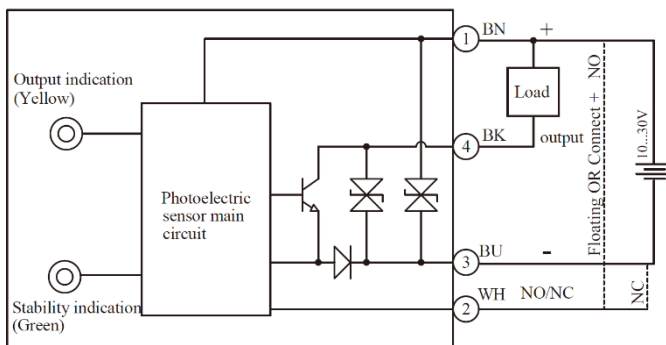
Detection type	Background suppression	Anti-ambient light	Anti-ambient light interference < 10,000lx;
Rated distance [Sn]	100mm		Incandescent light interference < 3,000lx
Light source	Red LED (660nm)	Indicator display	Green light: power indicator, stable indication (low
Light spot	8*8mm@10cm		brightness, weak signal)
Output	NO/NC		Yellow light: output indication, short circuit or overload
Hysteresis range [%/Sr]	≤5%		indication (flashing)
Supply voltage	10...30VDC	Ambient temperature	-15°C...60°C
Load current	≤100mA	Ambient humidity	35-95%RH (non-condensing)
Residual voltage	≤1.8V	Voltage withstand	1000V/AC 50/60Hz 60s
Distance adjustment	Non-adjustable	Insulation resistance	≥50MΩ(500VDC)
Consumption current	≤25mA	Vibration resistance	10...50Hz (0.5mm)
Circuit protection	Short-circuit, overload, reverse polarity	Degree of protection	IP67
	and zener protection	Housing material	ABS
Response time	≤0.5ms	Installation method	Composite installation
NO/NC adjustment	NO: white line is connected to the positive	Optical components	Plastic PMMA
	electrode;	Weight	52g
	NC: white line is connected to the negative	Connection type	2m PVC cable
	electrode:		

## Dimensions



# Wiring diagram

NPN



PNP

