

Plastic square shape photoelectric sensors **PBA** series



Features

- ◆ Diffuse reflection working principle;
- ◆ Excellent anti-interference performance
- ◆ High detection accuracy

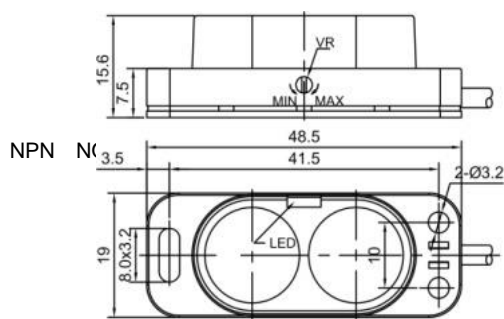
Part number

NPN NO	PBA-BC200DNO	PNP NO	PBA-BC200DPO
NPNC	PBA-BC200DNC	PNP NC	PBA-BC200DPC

Technical specifications

Detection type	Diffuse reflection	Consumption current	≤25mA
Rated distance [Sn]	2m(adjustable)	Circuit protection	Short-circuit, overload and reverse polarity
Standard target	White card reflection rate 90%	Response time	< 3ms
Light source	Infrared LED (880nm)	Output indicator	Power: Green LED Output: Red LED
Dimensions	48.5 mm *19 mm *15.6mm	Ambient temperature	-15°C...+55°C
Output	NO/NC (depends on part No.)	Ambient humidity	35-85%RH (non-condensing)
Supply voltage	12...24 VDC	Voltage withstand	1000V/AC 50/60Hz 60s
Target	Opaque object	Insulation resistance	≥50MΩ(500VDC)
Hysteresis range [%/Sr]	3...20%	Vibration resistance	10...50Hz (0.5mm)
Repeat accuracy [R]	≤5%	Degree of protection	IP54
Load current	≤100mA	Housing material	PC/ABS
Residual voltage	≤2.5V	Connection type	2m PVC cable

Dimensions



NPN NC PNP NC

Wiring diagram

